

Supplier's Product Code :  
Product Added :  
Last Updated by Supplier :  
erudus id :

F05011 (7893)  
24 June 2019  
17 July 2023  
e06665f5d8af478fafc80f01f5b07ed7



The information on the **Erudus System** has been supplied by the manufacturers of the products and, whilst the owners of the Erudus System take steps to ensure the information is regularly updated, they give no warranty and no guarantee that the information is accurate. Product information and ingredients may change, please always read product labels carefully in addition to using the information provided by Erudus One.

We do not accept liability for any inaccuracies or incorrect information contained on this site. Please visit <http://www.erudus.com/terms-and-conditions> for full terms and conditions.

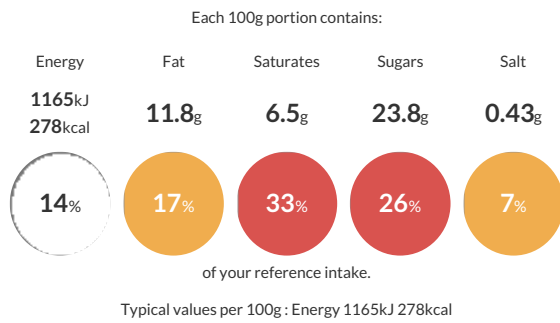
## Banoffee Gateau 2 Layer Gateau

Short Product Name:  
Banoffee Gateau

A sweet toffee sponge cut into two layers, filled with banana toffee sauce. Surrounded with cream and side coated with digestive biscuit crumb. The top is decorated with a ring of cream rosettes filled with toffee sauce. Solid un-cut product.

Traded Unit GTIN: **05010823522202** Internal GTIN: **5010823105511** Supplier: **Mademoiselle Desserts (Taunton)** Suppliers Product Code: **F05011 (7893)**

### Reference Intake



### Nutritional Information

Typical Values	Per 100g
Energy	1165kJ 278kcal
Carbohydrates	39.5g
of which sugars	23.8g
Fat	11.8g
of which saturates	6.5g
Fibre	0.9g
Protein	3.9g
Salt	0.43g

### Allergy Information

Key: **Contains** **May Contain**



### Dietary Information

Key: **Suitable for**



#### Allergen Statement

**ALLERGY ADVICE:** Allergens in the ingredients list (including cereals containing gluten) are shown in **CAPITALS**.

May contain traces of nuts. Suitable for vegetarians.

### Ingredients

Cream (**MILK**) (20%), Toffee Sauce (15%) (Water, Invert Sugar Syrup, Sweetened Condensed Milk (**MILK**, Sugar), Sugar, Modified Maize Starch, Cream (**MILK**), Butter (**MILK**), Natural Flavouring, Caramelised Sugar Syrup, Dextrose, Emulsifiers (Polyglycerol Esters of Fatty Acids, Mono- and Diglycerides of Fatty Acids), **BUTTERMILK** Powder, Stabiliser (Carrageenan), Acidity Regulator (Potassium Hydroxide)), Wheat Flour (**WHEAT** Flour, Calcium Carbonate, Niacin, Iron, Thiamin), **EGG**, Sugar, Water, Banana (4.9%), **WHEAT** Flour, Digestive Biscuit (Wheat Flour (**WHEAT** Flour, Calcium Carbonate, Iron, Nicotinamide, Thiamin), Vegetable Fat (Palm Oil, Rapeseed Oil), Sugar, Wholemeal **WHEAT** Flour, Invert Sugar Syrup, Raising Agent (Ammonium Bicarbonate)), Humectant (Glycerol), Margarine (Vegetable Oil (Palm, Rapeseed), Water, Emulsifier (Mono- and Diglycerides of Fatty Acids)), Whey Powder (**MILK**), Dextrose, Raising Agents (Disodium Diphosphates, Sodium Hydrogen Carbonate), Modified Maize Starch, Caramelised Sugar Syrup, Emulsifiers (Mono- and Diglycerides of Fatty Acids, Polyglycerol Esters of Fatty Acids), Rapeseed Oil, Natural Flavouring, **BUTTERMILK** Powder, Acidity Regulator (Citric Acid), Stabiliser (Carrageenan), Preservative (Calcium Propionate).