

Supplier's Product Code :
Product Added :
Last Updated by Supplier :
erudus id :

410774
05 February 2015
18 December 2020
e1085270a53e44b9a0410c80a80d7705



The information on the Erudus System has been supplied by the manufacturers of the products and, whilst the owners of the Erudus System take steps to ensure the information is regularly updated, they give no warranty and no guarantee that the information is accurate. Product information and ingredients may change, please always read product labels carefully in addition to using the information provided by Erudus One.

We do not accept liability for any inaccuracies or incorrect information contained on this site. Please visit <http://www.erudus.com/terms-and-conditions> for full terms and conditions.

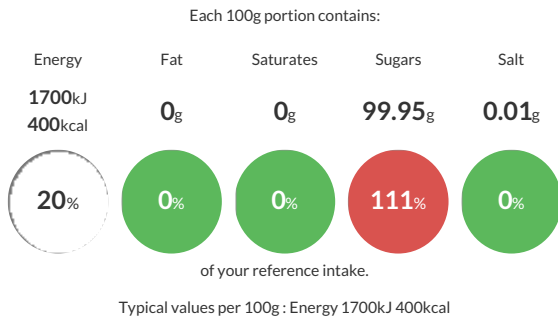
T&L WHITE SACHETS 1000 X 2.5G

Short Product Name:

A free flowing white crystalline sugar that is refined from raw cane sugar. This sugar is manufactured under Global Food Safety Initiative Standards and complies with the latest European Pharmacopoeia (EP), Japanese Pharmacopoeia (JP) and United States Pharmacopoeia (USP) monographs, but is not Pharmacopoeia certified.*

Traded Unit GTIN: **5010115107742** Internal GTIN: Supplier: **Tate & Lyle Sugars** Suppliers Product Code: **410774**

Reference Intake



Nutritional Information

Typical Values	Per 100g
Energy	1700kJ 400kCal
Carbohydrates	99.95g
of which sugars	99.95g
Fat	0g
of which saturates	0g
Fibre	0g
Protein	0g
Salt	0.01g

Allergy Information

Key: **Contains** **May Contain**



Allergen Statement

Allergen Status: This product is Allergen free as defined by European Regulation (EU) 1169/2011 and European Commission Regulation (EC) 41/2009 (Gluten ≤ 20ppm).

Ingredients

White Sugar

Dietary Information

Key: **Suitable for**

