

Supplier's Product Code :
Product Added :
Last Updated by Supplier :
erudus id :

HAS070
25 January 2024
25 January 2024
e1d02ebffa644bbaae40704b980e08cd



The information on the **Erudus System** has been supplied by the manufacturers of the products and, whilst the owners of the Erudus System take steps to ensure the information is regularly updated, they give no warranty and no guarantee that the information is accurate. Product information and ingredients may change, please always read product labels carefully in addition to using the information provided by Erudus One.

We do not accept liability for any inaccuracies or incorrect information contained on this site. Please visit <http://www.erudus.com/terms-and-conditions> for full terms and conditions.

Sumac 250g

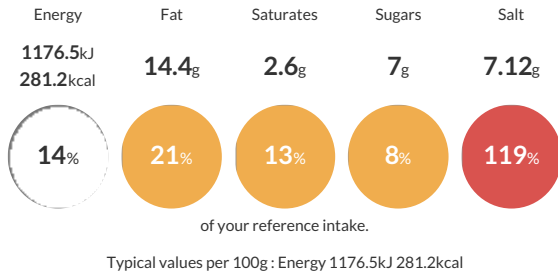
Short Product Name:
Sumac

Ground dark red berries of Rhus coriaria

Traded Unit GTIN: **5060103913237** Internal GTIN: **5060103912520** Supplier: **Centaaur Foods Ltd** Suppliers Product Code: **HAS070**

Reference Intake

Each 100g portion contains:



Nutritional Information

Typical Values	Per 100g
Energy	1176.5kJ 281.2kCal
Carbohydrates	48.1g
of which sugars	7g
Fat	14.4g
of which saturates	2.6g
Fibre	-g
Protein	13.3g
Salt	7.12g

Allergy Information

Key: **Contains** **May Contain**



Allergen Statement

May contain: **CELERY** , **MUSTARD** and **SESAME**.

Ingredients

Sumac berries, Salt (3% max).

Dietary Information

Key: **Suitable for**

