

Supplier's Product Code :
 Product Added :
 Last Updated by Supplier :
 erudus id :

FI0218
 29 October 2024
 29 October 2024
 e1e027647e1c479ebf7dbc582c3149f6



The information on the Erudus System has been supplied by the manufacturers of the products and, whilst the owners of the Erudus System take steps to ensure the information is regularly updated, they give no warranty and no guarantee that the information is accurate. Product information and ingredients may change, please always read product labels carefully in addition to using the information provided by Erudus One.

We do not accept liability for any inaccuracies or incorrect information contained on this site. Please visit <http://www.erudus.com/terms-and-conditions> for full terms and conditions.

Jude's Speculoos Ice Cream - 6 x 4L

Short Product Name:

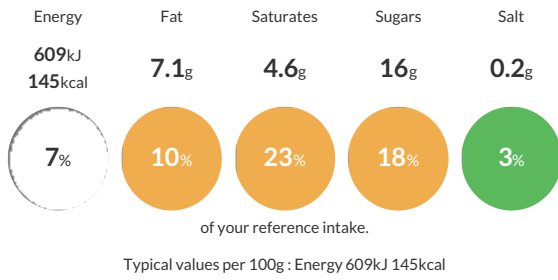
Jude's Speculoos Ice Cream - 6 x 4L

Speculoos Flavoured Ice Cream With a Spiced Caramelised Biscuit Crumb And Caramel Sauce

Traded Unit GTIN: Internal GTIN: 5060081116330 Supplier: Judes Ices Suppliers Product Code: FI0218

Reference Intake

Each 100g portion contains:



Nutritional Information

Typical Values	Per 100g
Energy	609kJ 145kCal
Carbohydrates	18g
of which sugars	16g
Fat	7.1g
of which saturates	4.6g
Fibre	-g
Protein	2.9g
Salt	0.2g

Allergy Information

Key: Contains May Contain

Contains Cereal/Gluten	Contains Milk	Contains Eggs	Does Not Contain Peanuts	Does Not Contain Nuts	Does Not Contain Crustaceans	Does Not Contain Mustard
Does Not Contain Fish	Does Not Contain Lupin	Does Not Contain Sesame	Does Not Contain Celery	Does Not Contain Soya	Does Not Contain Molluscs	Does Not Contain Sulphur Dioxide

Dietary Information

Key: Suitable for

Suitable for Vegetarian	May not be suitable for Vegan	May not be suitable for Kosher	May not be suitable for Halal	NO DATA for Coeliac
-------------------------	-------------------------------	--------------------------------	-------------------------------	---------------------

Allergen Statement

For allergens see ingredients in bold.

Ingredients

fresh whole **milk**, sugar, caramel sauce (10.3%) [sweetened condensed skimmed **milk**, sugar, water, glucose syrup, butter (**milk**), salt], double cream (**milk**), skimmed **milk** powder, caramelised biscuit crumb (3.4%) [**wheat** flour, sugar, vegetable oil SG (palm, rapeseed), invert sugar syrup, salt, cinnamon), non-hydrogenated vegetable fat SG (palm oil)], dextrose, coconut oil, emulsifier (mono- and diglycerides of fatty acids), stabilisers (locust bean gum, guar gum), colour (plain caramel), natural speculoos biscuit flavouring, pasteurised free range **egg** yolk.