

Supplier's Product Code :
Product Added :
Last Updated by Supplier :
erudus id :

F13860
20 March 2025
20 March 2025
e1eeda28390445ba86998cfcad417bda



The information on the **Erudus System** has been supplied by the manufacturers of the products and, whilst the owners of the Erudus System take steps to ensure the information is regularly updated, they give no warranty and no guarantee that the information is accurate. Product information and ingredients may change, please always read product labels carefully in addition to using the information provided by Erudus One.

We do not accept liability for any inaccuracies or incorrect information contained on this site. Please visit <http://www.erudus.com/terms-and-conditions> for full terms and conditions.

Alabama Chocolate Fudge Cake; Un-cut

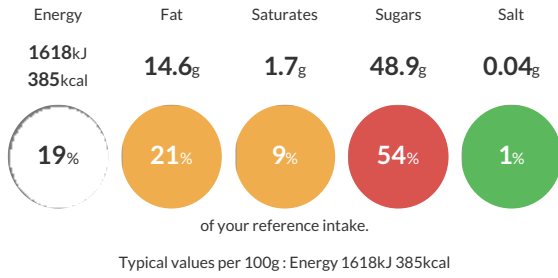
Short Product Name:
Alabama Chocolate Fudge Cake

A deliciously moist rich chocolate cake filled and covered with chocolate fudge icing before being hand decorated with a spiral swirl design. Whole

Traded Unit GTIN: **05010823516904** Internal GTIN: Supplier: **Mademoiselle Desserts (Taunton)** Suppliers Product Code: **F13860**

Reference Intake

Each 100g portion contains:



Nutritional Information

Typical Values	Per 100g
Energy	1618kJ 385kCal
Carbohydrates	58g
of which sugars	48.9g
Fat	14.6g
of which saturates	1.7g
Fibre	2.6g
Protein	3.8g
Salt	0.04g

Allergy Information

Key: **Contains** **May Contain**



Dietary Information

Key: **Suitable for**



Ingredients

Sugar, **WHEAT** Flour (**WHEAT** Flour, Calcium Carbonate, Iron, Niacin, Thiamin), Rapeseed Oil, Buttermilk (**MILK**), Fat Reduced Cocoa Powder (7%), **EGG**, Water, Dried Glucose Syrup, Palm Oil, Raising Agent (Potassium Bicarbonate), Emulsifiers (Mono- and Diglycerides of Fatty Acids, Polyglycerol Esters of Fatty Acids), Acidity Regulator (Potassium Hydroxide).