

Supplier's Product Code :
Product Added :
Last Updated by Supplier :
erudus id :

13279
31 August 2016
03 May 2023
e2c9b89a76cf44fc953b8678c975c366



The information on the Erudus System has been supplied by the manufacturers of the products and, whilst the owners of the Erudus System take steps to ensure the information is regularly updated, they give no warranty and no guarantee that the information is accurate. Product information and ingredients may change, please always read product labels carefully in addition to using the information provided by Erudus One.

We do not accept liability for any inaccuracies or incorrect information contained on this site. Please visit <http://www.erudus.com/terms-and-conditions> for full terms and conditions.

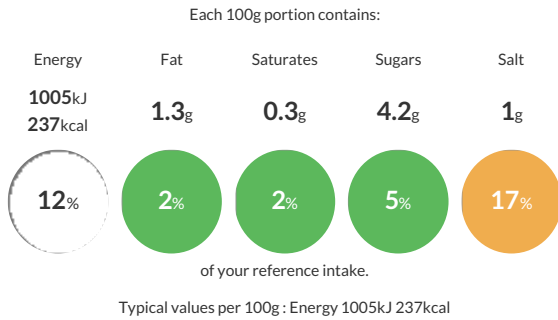
Roberts 19+2 White Bloomer (Box x 8FR)

Short Product Name:

White Bread

Traded Unit GTIN: **05011579221005** Internal GTIN: Supplier: **Frank Roberts & Sons Ltd** Suppliers Product Code: **13279**

Reference Intake



Nutritional Information

Typical Values	Per 100g
Energy	1005kJ 237kCal
Carbohydrates	45.4g
of which sugars	4.2g
Fat	1.3g
of which saturates	0.3g
Fibre	4.2g
Protein	8.9g
Salt	1g

Allergy Information

Key: **Contains** **May Contain**



Dietary Information

Key: **Suitable for**



Ingredients

WHEAT Flour (with added calcium, iron, niacin and thiamine), Water, Yeast, Salt, **SOYA** Flour, Preservative: E282. Emulsifier: E472e. Rapeseed Oil, Flour Treatment Agent: E300.