

Supplier's Product Code :  
Product Added :  
Last Updated by Supplier :  
erudus id :

BULG6CW  
14 August 2018  
28 July 2023  
e45cd74005cf46e09a0c2061788437a2



The information on the Erudus System has been supplied by the manufacturers of the products and, whilst the owners of the Erudus System take steps to ensure the information is regularly updated, they give no warranty and no guarantee that the information is accurate. Product information and ingredients may change, please always read product labels carefully in addition to using the information provided by Erudus One.

We do not accept liability for any inaccuracies or incorrect information contained on this site. Please visit <http://www.erudus.com/terms-and-conditions> for full terms and conditions.

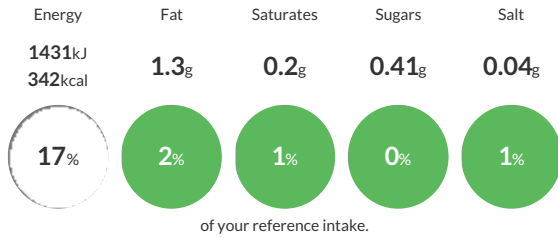
## MEDIUM BULGUR WHEAT 6x1kg

Cracked / granulated grains of 'Triticum Durum' wheat. Cleaned at origin.

Traded Unit GTIN: 5020933029874 Internal GTIN: 5020933024893 Supplier: Sleaford Quality Foods Suppliers Product Code: BULG6CW

### Reference Intake

Each 100g portion contains:



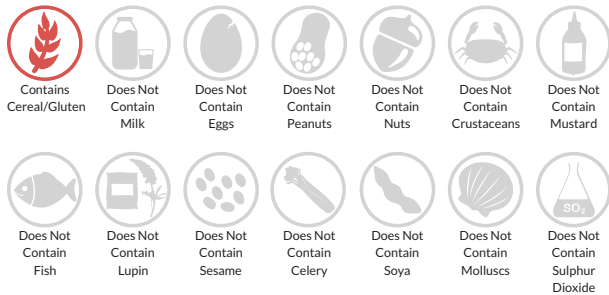
Typical values per 100g : Energy 1431kJ 342kcal

### Nutritional Information

Typical Values	Per 100g
Energy	1431kJ 342kCal
Carbohydrates	63.37g
of which sugars	0.41g
Fat	1.3g
of which saturates	0.2g
Fibre	12.5g
Protein	12.29g
Salt	0.04g

### Allergy Information

Key: Contains May Contain



### Dietary Information

Key: Suitable for



### Ingredients

Triticum Durum WHEAT.