

Supplier's Product Code :
Product Added :
Last Updated by Supplier :
erudus id :

F00020
19 August 2024
19 August 2024
e5505a7c86da461bb7b2aa9179cbb422



The information on the **Erudus System** has been supplied by the manufacturers of the products and, whilst the owners of the Erudus System take steps to ensure the information is regularly updated, they give no warranty and no guarantee that the information is accurate. Product information and ingredients may change, please always read product labels carefully in addition to using the information provided by Erudus One.

We do not accept liability for any inaccuracies or incorrect information contained on this site. Please visit <http://www.erudus.com/terms-and-conditions> for full terms and conditions.

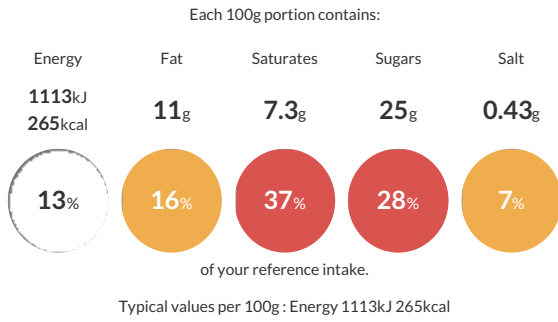
Black Forest Gateau 2 Layer Gateau

Short Product Name:
Black Forest Gateau

Two layers of fluffy chocolate sponge sandwiched with cherry sauce, covered with cream and topped with a piped crown of cream rosettes with a cherry sauce center studded with whole cherries. Decorated on all sides with chocolate flavour chips.

Traded Unit GTIN: **05010823521922** Internal GTIN: Supplier: **Mademoiselle Desserts (Taunton)** Suppliers Product Code: **F00020**

Reference Intake



Nutritional Information

Typical Values	Per 100g
Energy	1113kJ 265kCal
Carbohydrates	37g
of which sugars	25g
Fat	11g
of which saturates	7.3g
Fibre	1.2g
Protein	3.8g
Salt	0.43g

Allergy Information

Key: **Contains** **May Contain**



Dietary Information

Key: **Suitable for**



Ingredients

Cream (**MILK**) (22%), Sugar, Water, **WHEAT** Flour (**WHEAT** Flour, Calcium Carbonate, Niacin, Iron, Thiamin), Cherries (11%), **EGG**, Glucose Syrup, Fat Reduced Cocoa Powder (3%), Palm Oil, Dextrose, Cherry Concentrate, Modified Maize Starch, Raising Agents (Disodium Diphosphate, Sodium Hydrogen Carbonate), Skimmed **MILK** Powder, Whey Powder (**MILK**), Emulsifiers (Mono- and Diglycerides of Fatty Acids, Polyglycerol Esters of Fatty Acids, **SOYA** Lecithin), Modified Potato Starch, **WHEAT** Flour, Acidity Regulators (Citric Acid, Potassium Hydroxide), **BUTTERMILK** Powder, Natural Flavouring, Colours (Anthocyanins Curcumin), Thickeners (Xanthan Gum), Stabilisers (Carrageenan, Guar Gum).