

Supplier's Product Code :
Product Added :
Last Updated by Supplier :
erudus id :

80416
20 February 2024
20 February 2024
e675f510a9634ea6b7c47391acaa8bee



The information on the **Erudus System** has been supplied by the manufacturers of the products and, whilst the owners of the Erudus System take steps to ensure the information is regularly updated, they give no warranty and no guarantee that the information is accurate. Product information and ingredients may change, please always read product labels carefully in addition to using the information provided by Erudus One.

We do not accept liability for any inaccuracies or incorrect information contained on this site. Please visit <http://www.erudus.com/terms-and-conditions> for full terms and conditions.

Maple Pecan Plait

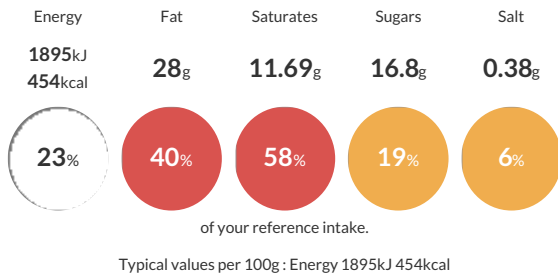
Short Product Name:
Maple Pecan Plait

Frozen pre-proved Danish pastry plait filled with maple syrup filling, topped with pecan nuts and glaze.

Traded Unit GTIN: **05701536804166** Internal GTIN: Supplier: **Lantmannen Unibake** Suppliers Product Code: **80416**

Reference Intake

Each 100g portion contains:



Nutritional Information

Typical Values	Per 100g
Energy	1895kJ 454kCal
Carbohydrates	44.6g
of which sugars	16.8g
Fat	28g
of which saturates	11.69g
Fibre	0.7g
Protein	5.6g
Salt	0.38g

Allergy Information

Key: **Contains** **May Contain**



Dietary Information

Key: **Suitable for**



Allergen Statement

May contain traces of other nuts.

Ingredients

DOUGH: WHEAT Flour (with Calcium, Iron, Niacin, Thiamin), Vegetable Margarine (Palm Oil, Rapeseed Oil, Water, Emulsifier (E471), Salt, Acidity Regulator (E330), Flavouring), Water, Yeast, Egg (EGG, Salt), Sugar, Improver (WHEAT Flour), Stabiliser (E417). **FILLING:** Sugar, Vegetable Margarine (Palm Oil, Rapeseed Oil, Water, Coconut Oil, Salt, Emulsifier (E471), Acidity Regulator (E330), Flavouring), Water, Maple Syrup (1%), Custard Powder (Sugar, Modified Potato Starch, Whey Powder (MILK), Skimmed MILK Powder, Coconut Oil, Stabilisers (E404, E450iii, E339ii, E451i), Glucose Syrup, Flavouring, Colour (E160aiii), Salt, MILK Protein), WHEAT Flour, Cane Sugar Syrup, Thickeners (E401, E440i), Flavouring. **TOPPING:** PECAN Nuts (4%), Glaze (Water, Glazing Agent (E953), Sugar, Gelling Agent (E406), Acidity Regulator (E330), Preservative (E202)).