

Supplier's Product Code :
Product Added :
Last Updated by Supplier :
erudus id :

F31341
04 February 2021
17 July 2023
e6cd4e7df8f04c25a104d2076c8af900



The information on the **Erudus System** has been supplied by the manufacturers of the products and, whilst the owners of the Erudus System take steps to ensure the information is regularly updated, they give no warranty and no guarantee that the information is accurate. Product information and ingredients may change, please always read product labels carefully in addition to using the information provided by Erudus One.

We do not accept liability for any inaccuracies or incorrect information contained on this site. Please visit <http://www.erudus.com/terms-and-conditions> for full terms and conditions.

Strawberry Cheesecake; Whole

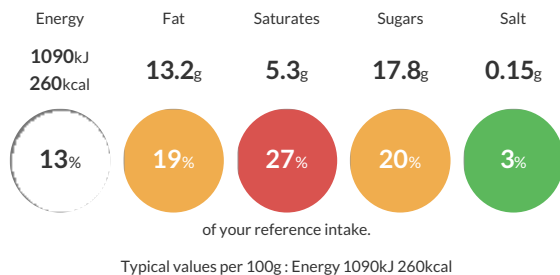
Short Product Name:
Strawberry Cheesecake

A crunchy digestive biscuit base topped with a creamy vanilla flavour cheesecake and topped with a strawberry fruit topping. Sold uncut.

Traded Unit GTIN: **05010823522820** Internal GTIN: **5010823105627** Supplier: **Mademoiselle Desserts (Taunton)** Suppliers Product Code: **F31341**

Reference Intake

Each 100g portion contains:



Nutritional Information

Typical Values	Per 100g
Energy	1090kJ 260kCal
Carbohydrates	31.3g
of which sugars	17.8g
Fat	13.2g
of which saturates	5.3g
Fibre	0.9g
Protein	3.9g
Salt	0.15g

Allergy Information

Key: **Contains** **May Contain**



Allergen Statement

ALLERGY ADVICE: Allergens in the ingredients list (including cereals containing gluten) are shown in **CAPITALS**.

May contain traces of nuts.

Suitable for vegetarians

Ingredients

Digestive Biscuit (18%) (Wheat Flour (**WHEAT** Flour, Calcium Carbonate, Iron, Nicotinamide, Thiamin), Vegetable Oil (Palm, Rapeseed), Sugar, Wholemeal **WHEAT** Flour, Invert Sugar Syrup, Raising Agent (Ammonium Bicarbonate)), Water, Low Fat Fromage Frais (**MILK**), Strawberries (13%), Sugar, Margarine (Vegetable Oil (Palm, Rapeseed), Water, Emulsifier (Mono- and Diglycerides of Fatty Acids)), Full Fat Soft Cheese (4.6%) (Cream (**MILK**), Water, Skimmed **MILK** Powder, Cornflour, **BUTTERMILK** Powder, Salt), Cream (**MILK**), Glucose Syrup, Free Range **EGG**, Modified Maize Starch, Wheat Flour (**WHEAT** Flour, Calcium Carbonate, Iron, Niacin, Thiamin), Strawberry Puree, Acidity Regulators (Citric Acid, Trisodium Citrate, Lactic Acid), Thickener (Pectin), Natural Flavouring, Stabilisers (Xanthan Gum, Locust Bean Gum, Guar Gum), Colours (Anthocyanins, Algal Carotenes).