

Supplier's Product Code :  
Product Added :  
Last Updated by Supplier :  
erudus id :

CHI042  
28 November 2023  
28 November 2023  
e796ceec7b814ecd837c19aaa411f8ea



The information on the Erudus System has been supplied by the manufacturers of the products and, whilst the owners of the Erudus System take steps to ensure the information is regularly updated, they give no warranty and no guarantee that the information is accurate. Product information and ingredients may change, please always read product labels carefully in addition to using the information provided by Erudus One.

We do not accept liability for any inaccuracies or incorrect information contained on this site. Please visit <http://www.erudus.com/terms-and-conditions> for full terms and conditions.

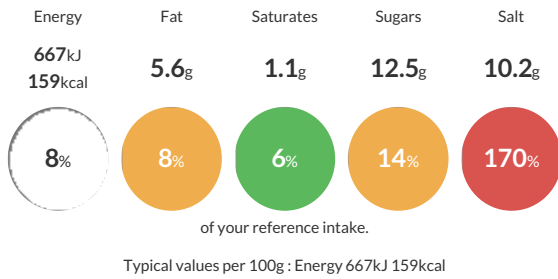
## Shiro Miso Paste 12 x 500g

Miso paste is naturally brewed by selected premier soybeans. It's full of deep fragrance and flavour of soybean. It's a good dipping sauce for soup, noodle, stew or other dishes as you like. Recommendation and water use ratio 1:10.

Traded Unit GTIN: 5060103917181 Internal GTIN: 5060103917174 Supplier: Centaur Foods Ltd Suppliers Product Code: CHI042

### Reference Intake

Each 100g portion contains:



### Nutritional Information

Typical Values	Per 100g
Energy	667kJ 159kCal
Carbohydrates	14.5g
of which sugars	12.5g
Fat	5.6g
of which saturates	1.1g
Fibre	2.9g
Protein	11.2g
Salt	10.2g

### Allergy Information

Key: **Contains** **May Contain**



#### Gluten Claim

Gluten content is less than 20ppm.

#### Allergen Statement

This product contain SOY.

### Ingredients

Water 34.9%, Soybean 29.8%, Rice 23.8%, Salt 11.5%

### Dietary Information

Key: **Suitable for**

