

Supplier's Product Code :
Product Added :
Last Updated by Supplier :
erudus id :

012256P
29 February 2024
01 March 2024
e84028265fd64616ba8700efb2b38962



The information on the Erudus System has been supplied by the manufacturers of the products and, whilst the owners of the Erudus System take steps to ensure the information is regularly updated, they give no warranty and no guarantee that the information is accurate. Product information and ingredients may change, please always read product labels carefully in addition to using the information provided by Erudus One.

We do not accept liability for any inaccuracies or incorrect information contained on this site. Please visit <http://www.erudus.com/terms-and-conditions> for full terms and conditions.

Purple Pineapple Chilli Beef 2.5kg

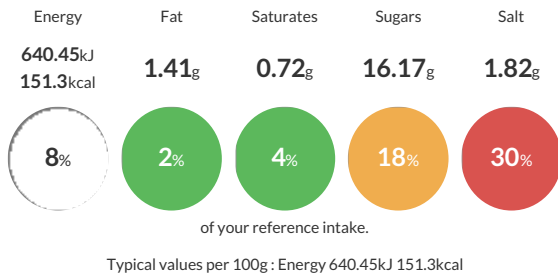
Short Product Name:
Chilli Beef

Shredded beef and red kidney beans in a sweet chilli sauce

Traded Unit GTIN: Internal GTIN: Supplier: Suppliers Product Code:

Reference Intake

Each 100g portion contains:



Nutritional Information

Typical Values	Per 100g
Energy	640.45kJ 151.3kCal
Carbohydrates	20.33g
of which sugars	16.17g
Fat	1.41g
of which saturates	0.72g
Fibre	1.51g
Protein	13.61g
Salt	1.82g

Allergy Information

Key: Contains May Contain



Dietary Information

Key: Suitable for



Ingredients

Beef Brisket 40% (Beef, Salt) Chilli Sauce 30% (Water, sugar, spirit vinegar, tomato paste, golden syrup, thickener [E1422 modified starch], salt, red pepper flake, onion kibbled, spice [cayenne, ginger], garlic, herb [coriander], paprika [E160c]) Red Kidney Beans 15% (Red kidney beans, water, salt) Thai Sweet Chilli Sauce 15% (Glucose syrup, sugar, water, white wine vinegar (contain sulphites), salt, spirit vinegar, modified maize starch, onion, garlic puree (water, dried garlic, acidity regulator citric acid), red chilli, red peppers, stabilisers (sodium alginate, xanthan gum), chilli powder, crushed chilli, preservative (potassium sorbitol), caramelised sugar syrup, colour (paprika extract)).