

Supplier's Product Code :  
Product Added :  
Last Updated by Supplier :  
erudus id :

F10234  
25 October 2024  
25 October 2024  
e84945e7598e44c792b0134dbf173385



The information on the Erudus System has been supplied by the manufacturers of the products and, whilst the owners of the Erudus System take steps to ensure the information is regularly updated, they give no warranty and no guarantee that the information is accurate. Product information and ingredients may change, please always read product labels carefully in addition to using the information provided by Erudus One.

We do not accept liability for any inaccuracies or incorrect information contained on this site. Please visit <http://www.erudus.com/terms-and-conditions> for full terms and conditions.

## Jude's Strawberries & Cream Ice Cream - 24 x 100ml

Short Product Name:

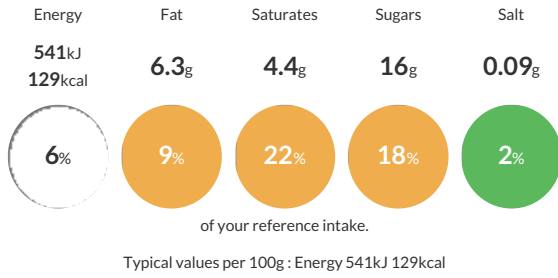
Strawberries & Cream Ice Cream

Judes Strawberries & Cream Ice Cream

Traded Unit GTIN: 05060081112448 Internal GTIN: 5060081112592 Supplier: Judes Ices Suppliers Product Code: F10234

### Reference Intake

Each 100g portion contains:



### Nutritional Information

Typical Values	Per 100g
Energy	541kJ 129kCal
Carbohydrates	16g
of which sugars	16g
Fat	6.3g
of which saturates	4.4g
Fibre	-g
Protein	2.5g
Salt	0.09g

### Allergy Information

Key: **Contains** **May Contain**



### Dietary Information

Key: **Suitable for**



### Allergen Statement

For allergens see ingredients in **BOLD**. May also contain **NUTS** and **PEANUT**.

### Ingredients

fresh whole **milk**, sugar, strawberry puree (12%), strawberries in syrup (10%) [strawberries (56%), sugar, water, gelling agent (pectin)], fresh double cream (**milk**) (9%), skimmed **milk powder**, coconut oil, pasteurised free range **egg yolk**, colour (red beet extract), natural flavouring, spirulina extract, dextrose, citric acid, emulsifier (mono- and diglycerides of fatty acids), stabilisers (locust bean gum, guar gum), water