

Supplier's Product Code :
Product Added :
Last Updated by Supplier :
erudus id :

RMLYL
13 August 2021
14 October 2022
ead96f3ded214c108c859a3a544c699d



The information on the **Erudus System** has been supplied by the manufacturers of the products and, whilst the owners of the Erudus System take steps to ensure the information is regularly updated, they give no warranty and no guarantee that the information is accurate. Product information and ingredients may change, please always read product labels carefully in addition to using the information provided by Erudus One.

We do not accept liability for any inaccuracies or incorrect information contained on this site. Please visit <http://www.erudus.com/terms-and-conditions> for full terms and conditions.

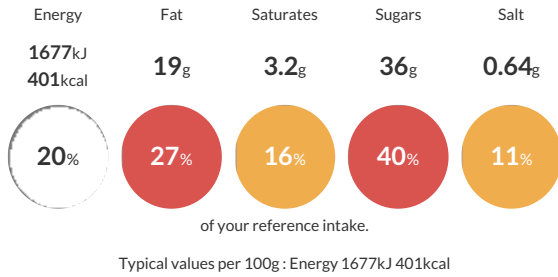
Chocolate Yule Log Mini Loaf

A light chocolate flavour sponge injected with a rich chocolate flavour filling, topped with chocolate flavour sauce and chocolate flake, presented in a decorative cardboard case.

Traded Unit GTIN: **5060158950539** Internal GTIN: **96120859** Supplier: **Love Handmade Cakes (Exquisite Handmade Cakes)** Suppliers Product Code: **RMLYL**

Reference Intake

Each 100g portion contains:



Nutritional Information

Typical Values	Per 100g
Energy	1677kJ 401kCal
Carbohydrates	53g
of which sugars	36g
Fat	19g
of which saturates	3.2g
Fibre	-g
Protein	4.5g
Salt	0.64g

Allergy Information

Key: **Contains** **May Contain**



Allergen Statement

For allergens, including cereals containing gluten, see ingredients in **BOLD**. May contain peanuts, nuts and other cereals containing gluten.

Ingredients

Dark Chocolate Flavour Fudge Icing (21%) (Sugar, Vegetable Oils (Palm, Rapeseed), Fat Reduced Cocoa Powder (5.5%), Emulsifiers (E471, **SOYA** Lecithin), Preservative (E202), Salt, Flavouring), Sugar, Wheat Flour (**WHEAT** Flour, Calcium Carbonate, Iron, Niacin, Thiamine), Pasteurised Liquid Whole **EGG**, Rapeseed Oil, Humectant (Vegetable Glycerine), Milk Chocolate Flakes (1%) (Sugar, **MILK**, Cocoa Butter, Cocoa Mass, Whey Powder (**MILK**), Vegetable Fats (Palm, Shea), Emulsifier (E442, E476), Flavourings), Modified Maize Starch, Fat Reduced Cocoa Powder (1%), Whey Powder (**MILK**), Raising Agents (E500, E450), Preservative (E202), Salt, Sugar Dusting (Dextrose, Sugar, Cornflour, Palm Oil), Natural Flavouring

Dietary Information

Key: **Suitable for**

