

Supplier's Product Code :
Product Added :
Last Updated by Supplier :
erudus id :

CHCB5KG
20 December 2022
28 June 2023
ecb3c31d6d034261b90c4cb20a60e2bf



The information on the **Erudus System** has been supplied by the manufacturers of the products and, whilst the owners of the Erudus System take steps to ensure the information is regularly updated, they give no warranty and no guarantee that the information is accurate. Product information and ingredients may change, please always read product labels carefully in addition to using the information provided by Erudus One.

We do not accept liability for any inaccuracies or incorrect information contained on this site. Please visit <http://www.erudus.com/terms-and-conditions> for full terms and conditions.

CHEESECAKE BASE MIX 4x1.25kg

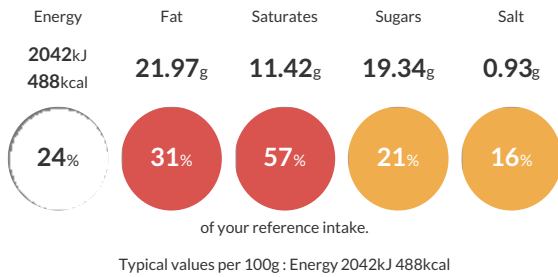
Short Product Name:
CHEESECAKE BASE MIX

A dry mix for manufacturing purposes. When reconstituted as instructed, a Cheesecake base is obtained.

Traded Unit GTIN: **5020933035622** Internal GTIN: **5020933030634** Supplier: **Sleaford Quality Foods** Suppliers Product Code: **CHCB5KG**

Reference Intake

Each 100g portion contains:



Nutritional Information

Typical Values	Per 100g
Energy	2042kJ 488kCal
Carbohydrates	66.4g
of which sugars	19.34g
Fat	21.97g
of which saturates	11.42g
Fibre	3.18g
Protein	7.91g
Salt	0.93g

Allergy Information

Key: **Contains** **May Contain**



Allergen Statement

Contains Wheat Gluten, May contain Milk

Ingredients

Fortified **WHEAT** Flour (**WHEAT** Flour, Calcium Carbonate, Iron, Nicotinamide, Thiamine), Wholemeal **WHEAT** Flour, Vegetable Shortening (Palm Oil, Rapeseed Oil), Sugar, Partially Invert Sugar Syrup, Raising Agents (Sodium Bicarbonate, Ammonium Bicarbonate), Salt, Palm Stearin

Dietary Information

Key: **Suitable for**

