

Supplier's Product Code :
Product Added :
Last Updated by Supplier :
erudus id :

POMI5LB
17 October 2014
28 January 2022
ed014d1411d2400c8a8d93ad39223bc1



The information on the **Erudus System** has been supplied by the manufacturers of the products and, whilst the owners of the Erudus System take steps to ensure the information is regularly updated, they give no warranty and no guarantee that the information is accurate. Product information and ingredients may change, please always read product labels carefully in addition to using the information provided by Erudus One.

We do not accept liability for any inaccuracies or incorrect information contained on this site. Please visit <http://www.erudus.com/terms-and-conditions> for full terms and conditions.

COMPLETE POTATO MIX 6 x 2.26kg

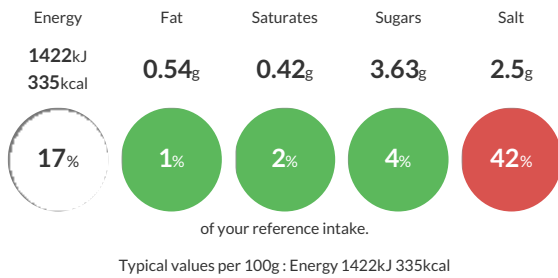
Short Product Name:

A complete potato mix consisting of dehydrated potato powder, whey solids and salt. On reconstitution as instructed, a smooth mashed potato is obtained.

Traded Unit GTIN: **05020933015068** Internal GTIN: **5020933010070** Supplier: **Sleaford Quality Foods** Suppliers Product Code: **POMI5LB**

Reference Intake

Each 100g portion contains:

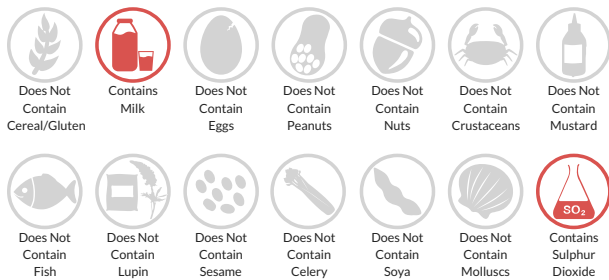


Nutritional Information

Typical Values	Per 100g
Energy	1422kJ 335kCal
Carbohydrates	73.2g
of which sugars	3.63g
Fat	0.54g
of which saturates	0.42g
Fibre	2.86g
Protein	7.93g
Salt	2.5g

Allergy Information

Key: **Contains** **May Contain**



Dietary Information

Key: **Suitable for**



Ingredients

Dried Potato (Contains Potato, Emulsifier E471, Stabiliser E450i, Antioxidant E330, Preservative: Sodium MetabiSULPHITE E223), MILK Solids, Salt.