

Supplier's Product Code :
Product Added :
Last Updated by Supplier :
erudus id :

RONE200V
14 November 2014
03 August 2023
ed8f8f4813be4b89a165743badb09571



The information on the **Erudus System** has been supplied by the manufacturers of the products and, whilst the owners of the Erudus System take steps to ensure the information is regularly updated, they give no warranty and no guarantee that the information is accurate. Product information and ingredients may change, please always read product labels carefully in addition to using the information provided by Erudus One.

We do not accept liability for any inaccuracies or incorrect information contained on this site. Please visit <http://www.erudus.com/terms-and-conditions> for full terms and conditions.

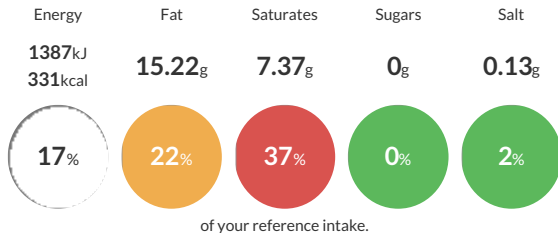
ROSEMARY NEEDLES 6x200g

Rosmarinus officinalis; sundried and separated from the stalks and other foreign bodies, cleaned and steam treated.

Traded Unit GTIN: **05020933075314** Internal GTIN: **5020933679895** Supplier: **Sleaford Quality Foods** Suppliers Product Code: **RONE200V**

Reference Intake

Each 100g portion contains:



Typical values per 100g : Energy 1387kJ 331kcal

Nutritional Information

Typical Values	Per 100g
Energy	1387kJ 331kCal
Carbohydrates	21.46g
of which sugars	0g
Fat	15.22g
of which saturates	7.37g
Fibre	42.6g
Protein	4.88g
Salt	0.13g

Allergy Information

Key: **Contains** **May Contain**



Dietary Information

Key: **Suitable for**



Ingredients

Dried Rosemary.