

Supplier's Product Code :
Product Added :
Last Updated by Supplier :
erudus id :

FDCAN45
26 February 2020
10 September 2024
ede3a47968414b97b2bb5d4187f54dae



The information on the Erudus System has been supplied by the manufacturers of the products and, whilst the owners of the Erudus System take steps to ensure the information is regularly updated, they give no warranty and no guarantee that the information is accurate. Product information and ingredients may change, please always read product labels carefully in addition to using the information provided by Erudus One.

We do not accept liability for any inaccuracies or incorrect information contained on this site. Please visit <http://www.erudus.com/terms-and-conditions> for full terms and conditions.

Mini Strawb & Cream Scones 26g (1 x 48)

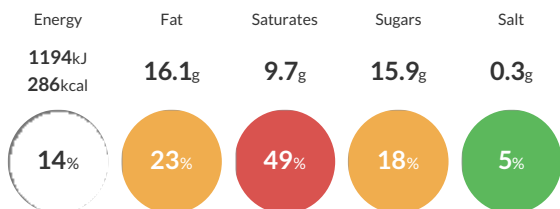
Short Product Name:

Light, crumbly mini scones topped with strawberry jam, a rosette of whipped, fresh double cream and a slice of fresh strawberry. Suitable for vegetarians. (1 x 48)

Traded Unit GTIN: 5060089681533 Internal GTIN: Supplier: Central Foods Group Ltd Suppliers Product Code: FDCAN45

Reference Intake

Each 100g portion contains:



of your reference intake.

Typical values per 100g : Energy 1194kJ 286kcal

Nutritional Information

Typical Values	Per 100g
Energy	1194kJ 286kCal
Carbohydrates	31.1g
of which sugars	15.9g
Fat	16.1g
of which saturates	9.7g
Fibre	1.4g
Protein	3.9g
Salt	0.3g

Allergy Information

Key: Contains May Contain



Dietary Information

Key: Suitable for



Allergen Statement

For allergens, including cereals containing gluten, see ingredients in CAPITALS.

Ingredients

Scone (Fortified Self-Raising Flour (**WHEAT** Flour (with Calcium, Iron, Niacin, Thiamin)), Raising Agents (Sodium Carbonates, Calcium Phosphates), Water, Whole **EGG**, Salted Butter (**MILK**), Caster Sugar, Double Cream (**MILK**), Rapeseed Oil, Whole **MILK** Powder), Whipped Cream (Double Cream (24%) (**MILK**), Caster Sugar), Strawberry Sauce (Strawberries (14%), Caster Sugar, Modified Maize Starch, Acidity Regulator (Citric Acid)), Strawberry Slice (8%).