

The information on the [Erudus System](#) has been supplied by the manufacturers of the products and, whilst the owners of the Erudus System take steps to ensure the information is regularly updated, they give no warranty and no guarantee that the information is accurate. Product information and ingredients may change, please always read product labels carefully in addition to using the information provided by Erudus One.

We do not accept liability for any inaccuracies or incorrect information contained on this site. Please visit <http://www.erudus.com/terms-and-conditions> for full terms and conditions.

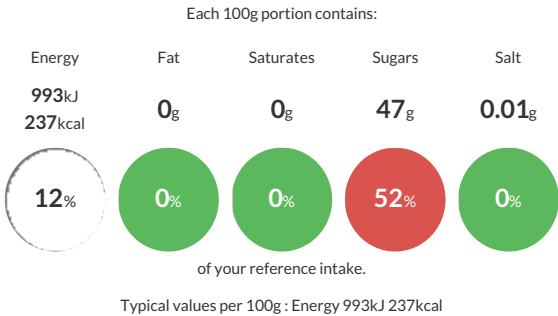
## Taylor & Colledge Organic Vanilla Bean Paste (2 x (6 x 65g))

Short Product Name:  
Organic Vanilla Bean Paste

Natural organic vanilla extract paste. Opaque dark brown paste with odour of Natural Vanilla with the inclusion of Pure Vanilla Seeds. Flavour of unique vanilla bean profile from premium blended beans.

Traded Unit GTIN: - Internal GTIN: 9300641001062 Supplier: R.H Amar & Co Ltd Suppliers Product Code: QU100

### Reference Intake



### Nutritional Information

Typical Values	Per 100g
Energy	993kJ 237kCal
Carbohydrates	47g
of which sugars	47g
Fat	0g
of which saturates	0g
Fibre	5.2g
Protein	0g
Salt	0.01g

### Allergy Information

Key: Contains May Contain

  
Does Not Contain Cereal/Gluten

  
Does Not Contain Milk

  
Does Not Contain Eggs

  
Does Not Contain Peanuts

  
Does Not Contain Nuts

  
Does Not Contain Crustaceans

  
Does Not Contain Mustard

  
Does Not Contain Fish

  
Does Not Contain Lupin

  
Does Not Contain Sesame

  
Does Not Contain Celery


  
Does Not Contain Soya


  
Does Not Contain Molluscs


  
Does Not Contain Sulphur Dioxide


### Dietary Information


Key: Suitable for

  
Suitable for Vegetarian

  
Suitable for Vegan

  
Suitable for Kosher

  
May not be suitable for Halal

  
May not be suitable for Coeliac

### Ingredients

Concentrated Vanilla Bean Extract with Seeds\*, Sugar (46.8% w/w)\*, Dietary Fibre: Inulin\*; Thickener: Gum Tragacanth (E413).

\*From certified organic production.