

Supplier's Product Code :
Product Added :
Last Updated by Supplier :
erudus id :

P.TARS11
01 October 2015
07 June 2022
ef2f76dade084ddb9063b603ee661c58



The information on the Erudus System has been supplied by the manufacturers of the products and, whilst the owners of the Erudus System take steps to ensure the information is regularly updated, they give no warranty and no guarantee that the information is accurate. Product information and ingredients may change, please always read product labels carefully in addition to using the information provided by Erudus One.

We do not accept liability for any inaccuracies or incorrect information contained on this site. Please visit <http://www.erudus.com/terms-and-conditions> for full terms and conditions.

895.46.072 72pc 11cm Sweet Tartlets - Pidy

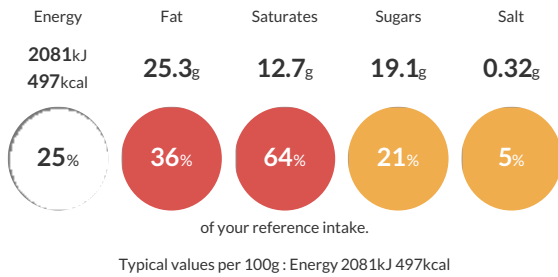
Short Product Name:
Sweet Tartlets

895.46 Sweet shortcrust pastry - ready to fill P.TARS11

Traded Unit GTIN: - Internal GTIN: 0020176895620 Supplier: HB Ingredients Suppliers Product Code: P.TARS11

Reference Intake

Each 100g portion contains:



Nutritional Information

Typical Values	Per 100g
Energy	2081kJ 497kCal
Carbohydrates	59.2g
of which sugars	19.1g
Fat	25.3g
of which saturates	12.7g
Fibre	2.2g
Protein	7.1g
Salt	0.32g

Allergy Information

Key: Contains May Contain



Dietary Information

Key: Suitable for



Ingredients

WHEAT flour (GLUTEN), vegetable fats and oils (palm, coconut, rapeseed, coloring agent: E160a), sugar, EGG, water, emulsifiers: E491 and E435, MILK proteins, inactive yeast, dextrose, salt