

Supplier's Product Code :  
Product Added :  
Last Updated by Supplier :  
erudus id :

10210  
08 November 2018  
03 April 2023  
ef7efa2638584f01885b316b2fb76368



The information on the Erudus System has been supplied by the manufacturers of the products and, whilst the owners of the Erudus System take steps to ensure the information is regularly updated, they give no warranty and no guarantee that the information is accurate. Product information and ingredients may change, please always read product labels carefully in addition to using the information provided by Erudus One.

We do not accept liability for any inaccuracies or incorrect information contained on this site. Please visit <http://www.erudus.com/terms-and-conditions> for full terms and conditions.

## Somerset Fruit and Fibre Muesli

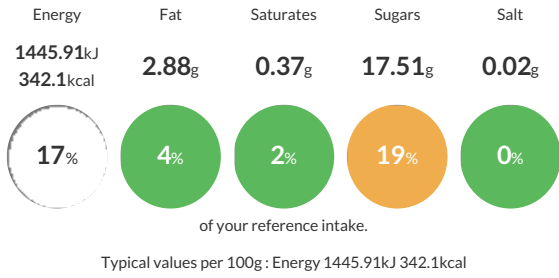
Short Product Name:  
Somerset Fruit and Fibre Muesli

A mix of flakes and dried fruits

Traded Unit GTIN: - Internal GTIN: Supplier: Alara Wholefoods Ltd Suppliers Product Code: 10210

### Reference Intake

Each 100g portion contains:



### Nutritional Information

Typical Values	Per 100g
Energy	1445.91kJ 342.1kCal
Carbohydrates	65.98g
of which sugars	17.51g
Fat	2.88g
of which saturates	0.37g
Fibre	8.86g
Protein	8.62g
Salt	0.02g

### Allergy Information

Key: Contains May Contain



### Dietary Information

Key: Suitable for



### Ingredients

WHEAT Flakes (28.78%), OATS Jumbo (28.78%), Sultanas (Sultanas, Vegetable oil) (14.39%), Malted WHEAT Flakes (WHEAT (99.5%), Malt (BARLEY) (0.5%)) (14.39%), RYE Flakes (3.60%), Apricots Chopped (Apricots, Rice flour, Preservative: SULPHUR DIOXIDE) (3.60%), Dates Chopped (Dates, Rice Flower) (2.88%).