

Supplier's Product Code :
Product Added :
Last Updated by Supplier :
erudus id :

12456376
13 September 2022
08 June 2023
f0c91df8886b4c7b9c3635e6d4f82ce5



The information on the **Erudus System** has been supplied by the manufacturers of the products and, whilst the owners of the Erudus System take steps to ensure the information is regularly updated, they give no warranty and no guarantee that the information is accurate. Product information and ingredients may change, please always read product labels carefully in addition to using the information provided by Erudus One.

We do not accept liability for any inaccuracies or incorrect information contained on this site. Please visit <http://www.erudus.com/terms-and-conditions> for full terms and conditions.

KIT KAT 2 Finger Milk 72x20.7g

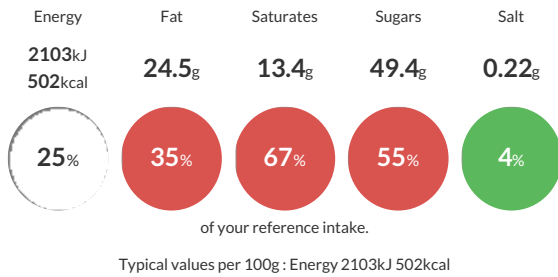
Short Product Name:
KIT KAT 2 finger milk 20.7g

Two crispy wafer fingers covered with milk chocolate (66%)

Traded Unit GTIN: **07613035221390** Internal GTIN: **50294534** Supplier : **Nestle UK** Suppliers Product Code : **12456376**

Reference Intake

Each 100g portion contains:



Nutritional Information

Typical Values	Per 100g
Energy	2103kJ 502kCal
Carbohydrates	62.3g
of which sugars	49.4g
Fat	24.5g
of which saturates	13.4g
Fibre	2.3g
Protein	7g
Salt	0.22g

Allergy Information

Key: **Contains** **May Contain**



Allergen Statement

Contains: **MILK** and **WHEAT GLUTEN**

Ingredients

Sugar, **WHEAT** flour (contains Calcium, Iron, Thiamin and Niacin), **MILK** powders (whole and skimmed), Cocoa mass, Cocoa butter, Vegetable fats (Palm, Shea, Mango kernel, Sal), **LACTOSE** and proteins from whey (from **MILK**), Whey powder (from **MILK**), Butterfat (from **MILK**), Emulsifier (Lecithins), Yeast, Raising agent (Sodium bicarbonate), Natural flavourings.

Dietary Information

Key: **Suitable for**

