

Supplier's Product Code : 19123901  
 Product Added : 16 July 2024  
 Last Updated by Supplier : 16 July 2024  
 erudus id : f336ddc64c7f483c9837b77a1f8b8c71



The information on the **Erudus System** has been supplied by the manufacturers of the products and, whilst the owners of the Erudus System take steps to ensure the information is regularly updated, they give no warranty and no guarantee that the information is accurate. Product information and ingredients may change, please always read product labels carefully in addition to using the information provided by Erudus One.

We do not accept liability for any inaccuracies or incorrect information contained on this site. Please visit <http://www.erudus.com/terms-and-conditions> for full terms and conditions.

## Knorr Garde D'or Bechamel Ready-To-Use sauce 6x1L

Short Product Name:

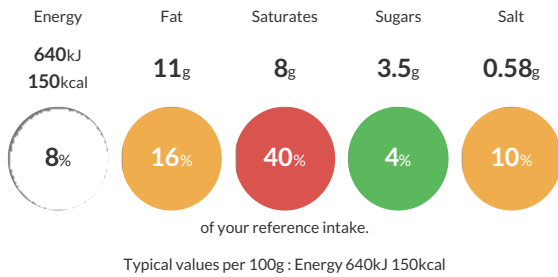
Knorr Garde D'or Bechamel Ready-To-Use sauce 6x1L

Bechamel prepared sauce

Traded Unit GTIN: **8712100912399** Internal GTIN: **8413800001115** Supplier: **Unilever UK Limited** Suppliers Product Code: **19123901**

### Reference Intake

Each 100g portion contains:



### Nutritional Information

Typical Values	Per 100g
Energy	640kJ 150kCal
Carbohydrates	10g
of which sugars	3.5g
Fat	11g
of which saturates	8g
Fibre	0.3g
Protein	3.5g
Salt	0.58g

### Allergy Information

Key: **Contains** **May Contain**

Contains Cereal/Gluten	Contains Milk	Does Not Contain Eggs	Does Not Contain Peanuts	Does Not Contain Nuts	Does Not Contain Crustaceans	Does Not Contain Mustard
Does Not Contain Fish	Does Not Contain Lupin	Does Not Contain Sesame	Does Not Contain Celery	Does Not Contain Soya	Does Not Contain Molluscs	Does Not Contain Sulphur Dioxide

### Dietary Information

Key: **Suitable for**

Suitable for Vegetarian	May not be suitable for Vegan	May not be suitable for Kosher	May not be suitable for Halal	NO DATA for Coeliac
-------------------------	-------------------------------	--------------------------------	-------------------------------	---------------------

### Ingredients

Whole MILK, CREAM, water, WHEAT flour, modified maize starch, salt, flavourings.