

Supplier's Product Code : 40400  
 Product Added : 13 February 2024  
 Last Updated by Supplier : 13 February 2024  
 erudus id : f3fd399dcb3431a8fbb846557743963



The information on the **Erudus System** has been supplied by the manufacturers of the products and, whilst the owners of the Erudus System take steps to ensure the information is regularly updated, they give no warranty and no guarantee that the information is accurate. Product information and ingredients may change, please always read product labels carefully in addition to using the information provided by Erudus One.

We do not accept liability for any inaccuracies or incorrect information contained on this site. Please visit <http://www.erudus.com/terms-and-conditions> for full terms and conditions.

## Mission 11cm Plain Tortilla 12ct x 24

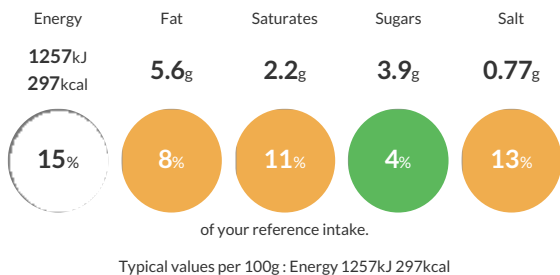
Short Product Name:  
Plain Tortillas

Mission Foods Plain Tortilla 11cm / 4.4" size. Packed in 12ct x 24 per case.

Traded Unit GTIN: 05036034006065 Internal GTIN: Supplier: Mission Foods (Coventry) Suppliers Product Code: 40400

### Reference Intake

Each 100g portion contains:



### Nutritional Information

Typical Values	Per 100g
Energy	1257kJ 297kCal
Carbohydrates	53g
of which sugars	3.9g
Fat	5.6g
of which saturates	2.2g
Fibre	-g
Protein	7.9g
Salt	0.77g

### Allergy Information

Key: Contains May Contain

Contains Cereal/Gluten	Does Not Contain Milk	Does Not Contain Eggs	Does Not Contain Peanuts	Does Not Contain Nuts	Does Not Contain Crustaceans	Does Not Contain Mustard
Does Not Contain Fish	Does Not Contain Lupin	Does Not Contain Sesame	Does Not Contain Celery	Does Not Contain Soya	Does Not Contain Molluscs	Does Not Contain Sulphur Dioxide

### Dietary Information

Key: Suitable for

Suitable for Vegetarian	Suitable for Vegan	May not be suitable for Kosher	May not be suitable for Halal	NO DATA for Coeliac
-------------------------	--------------------	--------------------------------	-------------------------------	---------------------

### Ingredients

Fortified <b>WHEAT</b> Flour (<b>WHEAT</b> Flour, Calcium, Iron, Niacin, Thiamin), Water, Vegetable Oils (Palm Oil, Rapeseed Oil), Sugar, Raising Agents (Sodium Bicarbonate, Disodium Diphosphate), Acidity Regulator (Malic Acid), Stabiliser (Sodium Carboxymethyl Cellulose), Salt.