

Supplier's Product Code :  
Product Added :  
Last Updated by Supplier :  
erudus id :

FC737  
10 January 2022  
10 January 2022  
f4d2b2c640d548f89d92d8305f8616f



The information on the **Erudus System** has been supplied by the manufacturers of the products and, whilst the owners of the Erudus System take steps to ensure the information is regularly updated, they give no warranty and no guarantee that the information is accurate. Product information and ingredients may change, please always read product labels carefully in addition to using the information provided by Erudus One.

We do not accept liability for any inaccuracies or incorrect information contained on this site. Please visit <http://www.erudus.com/terms-and-conditions> for full terms and conditions.

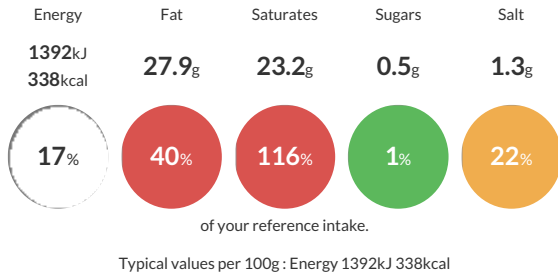
## BRIE BRIQUE PAVE VAL DE SAONE 1.2KG

BRIE

Traded Unit GTIN: **93324040202676** Internal GTIN: **03324040112439** Supplier: **Cheese Cellar (H&B Foods)** Suppliers Product Code: **FC737**

### Reference Intake

Each 100g portion contains:



### Nutritional Information

Typical Values	Per 100g
Energy	1392kJ 338kCal
Carbohydrates	1.8g
of which sugars	0.5g
Fat	27.9g
of which saturates	23.2g
Fibre	0g
Protein	19.8g
Salt	1.3g

### Allergy Information

Key: **Contains** **May Contain**

<b>Gluten &lt; 20ppm</b> Does Not Contain Cereal/Gluten	<b>Contains Milk</b>	Does Not Contain Eggs	Does Not Contain Peanuts	Does Not Contain Nuts	Does Not Contain Crustaceans	Does Not Contain Mustard
Does Not Contain Fish	Does Not Contain Lupin	Does Not Contain Sesame	Does Not Contain Celery	Does Not Contain Soya	Does Not Contain Molluscs	Does Not Contain Sulphur Dioxide

#### Gluten Claim

Gluten content is less than 20ppm.

#### Allergen Statement

Contains milk

### Ingredients

Pasteurized cow's MILK and pasteurized cream (MILK), Salt, Microbial coagulant, Lactic ferments and ripening cultures, Firming agent: calcium chloride.

### Dietary Information

Key: **Suitable for**

<b>Suitable for Vegetarian</b>	<b>May not be suitable for Vegan</b>	<b>May not be suitable for Kosher</b>	<b>May not be suitable for Halal</b>	<b>Suitable for Coeliac</b>
--------------------------------	--------------------------------------	---------------------------------------	--------------------------------------	-----------------------------