

Supplier's Product Code :
Product Added :
Last Updated by Supplier :
erudus id :

4055009
02 December 2020
02 December 2020
f58914ceee504f1c908dc4a5d7873adf



The information on the Erudus System has been supplied by the manufacturers of the products and, whilst the owners of the Erudus System take steps to ensure the information is regularly updated, they give no warranty and no guarantee that the information is accurate. Product information and ingredients may change, please always read product labels carefully in addition to using the information provided by Erudus One.

We do not accept liability for any inaccuracies or incorrect information contained on this site. Please visit <http://www.erudus.com/terms-and-conditions> for full terms and conditions.

Frozen Gressingham Duck Legs 1.0kg x10

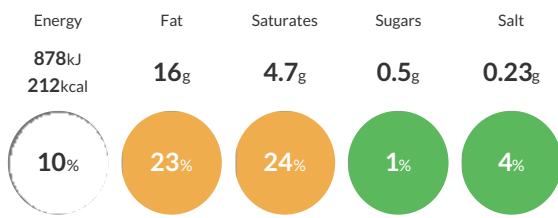
Short Product Name:
Duck Legs

Ducks are killed, bled, plucked and eviscerated in an EC approved slaughterhouse in accordance with all current regulations. Ducks are then inspected. Whole ducks are weighed and graded. Bird must be of Grade A quality, and free from excessive feathers, wax/foreign body and debris. Ducks are portioned. 1.0 kg of duck legs (per leg 0-250g) are packed in a Gressingham printed bag and sealed using the swing lid machine. X10 bags placed in the box, box sealed with strapping (2x) and passed through the metal detector as per procedure. Outer case label applied and boxes palletised. Pallets are blast frozen at -18°C and stored @ this temperature. Product loaded onto pre-frozen transport. Vehicle to be clean, free from odour and not used to carry anything capable of contaminating the product.

Traded Unit GTIN: 05016157533921 Internal GTIN: Supplier: Gressingham Foods Suppliers Product Code: 4055009

Reference Intake

Each 100g portion contains:



of your reference intake.

Typical values per 100g : Energy 878kJ 212kcal

Nutritional Information

Typical Values	Per 100g
Energy	878kJ 212kCal
Carbohydrates	0.8g
of which sugars	0.5g
Fat	16g
of which saturates	4.7g
Fibre	0.5g
Protein	15g
Salt	0.23g

Allergy Information

Key: Contains May Contain



Gluten Claim

Gluten content is less than 20ppm.

Ingredients

Duck (100%)

Dietary Information

Key: Suitable for

