

Supplier's Product Code :
Product Added :
Last Updated by Supplier :
erudus id :

502
30 January 2014
04 February 2022
f6f9383c013947c588a175fa918fc934



The information on the **Erudus System** has been supplied by the manufacturers of the products and, whilst the owners of the Erudus System take steps to ensure the information is regularly updated, they give no warranty and no guarantee that the information is accurate. Product information and ingredients may change, please always read product labels carefully in addition to using the information provided by Erudus One.

We do not accept liability for any inaccuracies or incorrect information contained on this site. Please visit <http://www.erudus.com/terms-and-conditions> for full terms and conditions.

Speldhurst Cumberland Pork Sausage

Short Product Name:

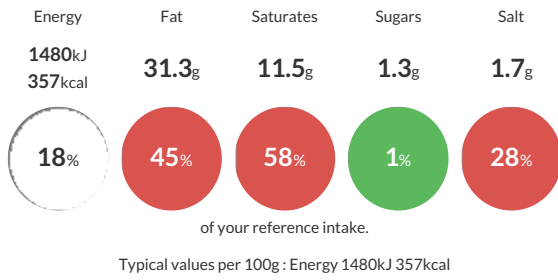
Cumberland Pork Sausage

Cumberland Pork Sausage

Traded Unit GTIN: Internal GTIN: Supplier: **Speldhurst Quality Foods** Suppliers Product Code: **502**

Reference Intake

Each 100g portion contains:



Nutritional Information

Typical Values	Per 100g
Energy	1480kJ 357kCal
Carbohydrates	7.2g
of which sugars	1.3g
Fat	31.3g
of which saturates	11.5g
Fibre	0.6g
Protein	11.8g
Salt	1.7g

Allergy Information

Key: **Contains** **May Contain**



Dietary Information

Key: **Suitable for**



Ingredients

Ingredients

Pork Cuts (80% - Pork Shoulder 46.5%, Pork Belly 33.5%), water, rusk (**WHEAT** flour (**GLUTEN**), salt, raising agent E503), spices, herbs, sugar, emulsifier E450, citrus fibre, Preservative E223 (**SULPHITE**), anti-oxidant E301, Filled into a Natural casing.