

Supplier's Product Code :
 Product Added :
 Last Updated by Supplier :
 erudus id :

27245
 01 August 2024
 02 August 2024
 f816e32839d54523a0d854bf96c97e3e



The information on the Erudus System has been supplied by the manufacturers of the products and, whilst the owners of the Erudus System take steps to ensure the information is regularly updated, they give no warranty and no guarantee that the information is accurate. Product information and ingredients may change, please always read product labels carefully in addition to using the information provided by Erudus One.

We do not accept liability for any inaccuracies or incorrect information contained on this site. Please visit <http://www.erudus.com/terms-and-conditions> for full terms and conditions.

Butter Triple Pain au chocolat x 60

Short Product Name:

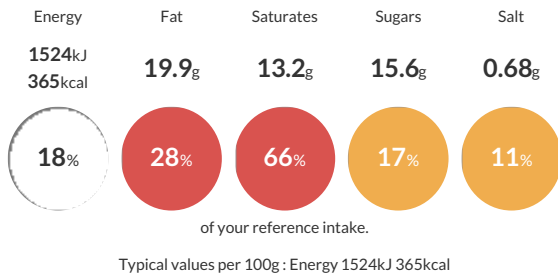
Butter Triple Pain au chocolat

Ready to bake, frozen Pain au chocolat

Traded Unit GTIN: **3291811157589** Internal GTIN: Supplier: **Dellfrance** Suppliers Product Code: **27245**

Reference Intake

Each 100g portion contains:



Nutritional Information

| Typical Values | Per 100g |
|--------------------|-------------------|
| Energy | 1524kJ 365kCal |
| Carbohydrates | 38.2g |
| of which sugars | 15.6g |
| Fat | 19.9g |
| of which saturates | 13.2g |
| Fibre | 2.6g |
| Protein | 6.9g |
| Salt | 0.68g |

Allergy Information

Key: **Contains** **May Contain**



Dietary Information

Key: **Suitable for**



Ingredients

Wheat flour, filling 17% (rehydrated whole milk, fresh whole milk, white chocolate 15% (sugar, cocoa butter, whole milk powder, skimmed milk powder, natural vanilla flavouring), sugar, modified starch, dairy cream (milk), thickener (E466), preservative (E202), salt, stabiliser (E401), natural vanilla extract, coloring ingredient (safflower extract)), water, butter 15,5% (milk), chocolate 6% (sugar, cocoa mass, cocoa butter, emulsifier (E322 (soya))), milk chocolate drops 4,5% (sugar, whole milk powder, cocoa butter, cocoa mass, emulsifier (E322 (soya))), natural vanilla flavouring), dark chocolate topping 2,5% (sugar, cocoa mass, cocoa butter, emulsifier (E322 (soya))), sugar, yeast, wheat gluten, eggs, salt, flour treatment agent (E300), enzyme.