

Supplier's Product Code :  
Product Added :  
Last Updated by Supplier :  
erudus id :

419005  
01 July 2024  
01 July 2024  
f88ab9287cf946c7861fe6d25c1cd00e



The information on the Erudus System has been supplied by the manufacturers of the products and, whilst the owners of the Erudus System take steps to ensure the information is regularly updated, they give no warranty and no guarantee that the information is accurate. Product information and ingredients may change, please always read product labels carefully in addition to using the information provided by Erudus One.

We do not accept liability for any inaccuracies or incorrect information contained on this site. Please visit <http://www.erudus.com/terms-and-conditions> for full terms and conditions.

## Triple Lion Pasta Conchiglie 4x3kg

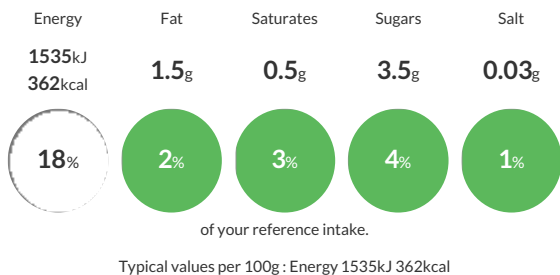
Short Product Name:  
Pasta Conchiglie

DRIED PASTA SHAPES MADE FROM DURUM WHEAT SEMOLINA

Traded Unit GTIN: 15021339577225 Internal GTIN: 5021339577228 Supplier: SPL Foods Ltd Suppliers Product Code: 419005

### Reference Intake

Each 100g portion contains:



### Nutritional Information

| Typical Values     | Per 100g          |
|--------------------|-------------------|
| Energy             | 1535kJ<br>362kCal |
| Carbohydrates      | 73.6g             |
| of which sugars    | 3.5g              |
| Fat                | 1.5g              |
| of which saturates | 0.5g              |
| Fibre              | 3g                |
| Protein            | 12g               |
| Salt               | 0.03g             |

### Allergy Information

Key: Contains May Contain

|                        |                        |                         |                          |                       |                              |                                  |
|------------------------|------------------------|-------------------------|--------------------------|-----------------------|------------------------------|----------------------------------|
| Contains Cereal/Gluten | Does Not Contain Milk  | Does Not Contain Eggs   | Does Not Contain Peanuts | Does Not Contain Nuts | Does Not Contain Crustaceans | Does Not Contain Mustard         |
| Does Not Contain Fish  | Does Not Contain Lupin | Does Not Contain Sesame | Does Not Contain Celery  | Does Not Contain Soya | Does Not Contain Molluscs    | Does Not Contain Sulphur Dioxide |

### Dietary Information

Key: Suitable for

|                         |                    |                                |                               |                     |
|-------------------------|--------------------|--------------------------------|-------------------------------|---------------------|
| Suitable for Vegetarian | Suitable for Vegan | May not be suitable for Kosher | May not be suitable for Halal | NO DATA for Coeliac |
|-------------------------|--------------------|--------------------------------|-------------------------------|---------------------|

### Ingredients

Durum <b>WHEAT </b>Semolina.