

Supplier's Product Code :  
Product Added :  
Last Updated by Supplier :  
erudus id :

C-HF3SPRL/12  
15 April 2024  
15 April 2024  
fa9a21887c2e46a49fe009d48cdf5ae9



The information on the Erudus System has been supplied by the manufacturers of the products and, whilst the owners of the Erudus System take steps to ensure the information is regularly updated, they give no warranty and no guarantee that the information is accurate. Product information and ingredients may change, please always read product labels carefully in addition to using the information provided by Erudus One.

We do not accept liability for any inaccuracies or incorrect information contained on this site. Please visit <http://www.erudus.com/terms-and-conditions> for full terms and conditions.

## Heartsease Farm British Raspberry Lemonade Sparkling premium presse cans 330ml

Short Product Name:

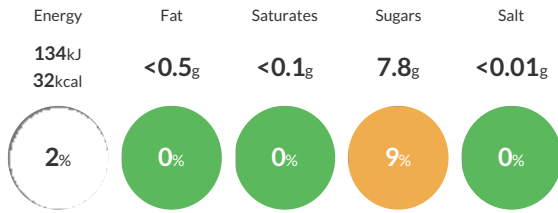
Heartsease Farm Sparkling Raspberry Lemonade

A blend of hand-picked British raspberries grown in the neighbouring counties to Heartsease Farm take centre stage in our twist on traditional lemonade. Made with 100% natural ingredients and Radnorshire spring water, this is the perfect long drink which looks as delightful as it tastes. Our growers are all Red Tractor certified, and our fruit is crushed into juice just 40 miles from our farm. - We hope you enjoy them. - Just pure goodness and nothing artificial. - 100% natural. Heartsease Farm tastes beautiful just poured over ice in a tall glass or as a mixer with your favourite spirit. You could always try our 'Raspberry Pitchfork' by adding Gin, Sugar and Bitters mixed with Ice and topped with Raspberry Lemonade.

Traded Unit GTIN: 05026109009947 Internal GTIN: 5026109009930 Supplier: Radnor Hills Mineral Water Company Ltd Suppliers Product Code: C-HF3SPRL/12

### Reference Intake

Each 100ml portion contains:



of your reference intake.

Typical values per 100ml: Energy 134kJ 32kcal

### Nutritional Information

Typical Values	Per 100ml
Energy	134kJ 32kCal
Carbohydrates	7.8g
of which sugars	7.8g
Fat	<0.5g
of which saturates	<0.1g
Fibre	-g
Protein	<0.5g
Salt	<0.01g

### Allergy Information

Key: Contains May Contain



### Dietary Information

Key: Suitable for



### Allergen Statement

N/A

### Ingredients

Carbonated spring water, Sugar, Lemon juice from concentrate (5%), Raspberry Juice (4%), Lemon Comminute, Orange Juice from Concentrate, Flavouring, Carrot and Hibiscus Extracts.