

Supplier's Product Code :
Product Added :
Last Updated by Supplier :
erudus id :

410776
05 February 2015
18 December 2020
faba328b0cb94be9b71925319c67ec86



The information on the [Erudus System](#) has been supplied by the manufacturers of the products and, whilst the owners of the Erudus System take steps to ensure the information is regularly updated, they give no warranty and no guarantee that the information is accurate. Product information and ingredients may change, please always read product labels carefully in addition to using the information provided by Erudus One.

We do not accept liability for any inaccuracies or incorrect information contained on this site. Please visit <http://www.erudus.com/terms-and-conditions> for full terms and conditions.

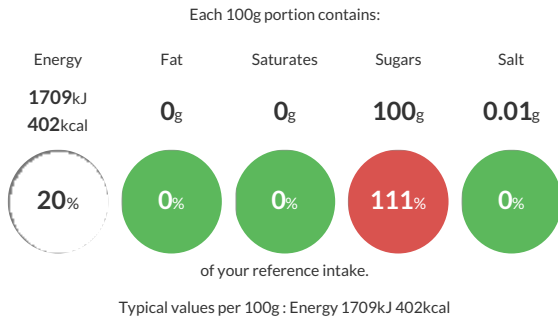
T&L DEM STICKS 1000 X 2.5G

Short Product Name:

A free flowing sugar with glassy amber coloured crystals and a fruity flavour. Ideal for use in coffee and beverages.

Traded Unit GTIN: **05010115107766** Internal GTIN: Supplier : **Tate & Lyle Sugars** Suppliers Product Code : **410776**

Reference Intake



Nutritional Information

Typical Values	Per 100g
Energy	1709kJ 402kCal
Carbohydrates	100g
of which sugars	100g
Fat	0g
of which saturates	0g
Fibre	0g
Protein	0.5g
Salt	0.01g

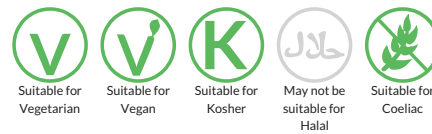
Allergy Information

Key: **Contains** **May Contain**



Dietary Information

Key: **Suitable for**



Allergen Statement

Allergen Status: This product is Allergen free as defined by European Regulation (EU) 1169/2011 and European Commission Regulation (EC) 41/2009 (Gluten ≤ 20ppm).

Ingredients

Demerara Sugar