

Supplier's Product Code :
Product Added :
Last Updated by Supplier :
erudus id :

IT031
05 March 2014
20 April 2021
fc39a49e0ba64c8cb1b57fd9bd0f1f38



The information on the Erudus System has been supplied by the manufacturers of the products and, whilst the owners of the Erudus System take steps to ensure the information is regularly updated, they give no warranty and no guarantee that the information is accurate. Product information and ingredients may change, please always read product labels carefully in addition to using the information provided by Erudus One.

We do not accept liability for any inaccuracies or incorrect information contained on this site. Please visit <http://www.erudus.com/terms-and-conditions> for full terms and conditions.

Mascarpone Galbani 250 g

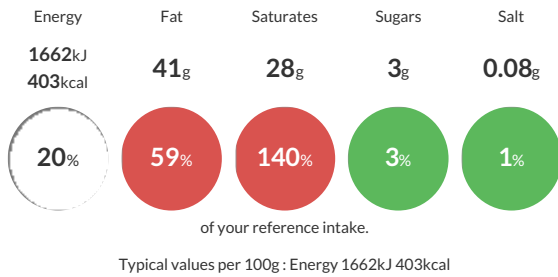
Short Product Name:
Mascarpone

Full fat soft cheese made from Cow's milk

Traded Unit GTIN: Internal GTIN: Supplier: **Cheese Cellar (H&B Foods)** Suppliers Product Code: **IT031**

Reference Intake

Each 100g portion contains:



Nutritional Information

Typical Values	Per 100g
Energy	1662kJ 403kCal
Carbohydrates	4g
of which sugars	3g
Fat	41g
of which saturates	28g
Fibre	0.1g
Protein	4.8g
Salt	0.08g

Allergy Information

Key: **Contains** **May Contain**



Gluten Claim

Gluten content is less than 20ppm.

Allergen Statement

Contains Milk

Ingredients

Pasteurised Cream, Pasteurised MILK, Acidity Regulator [Citric Acid].

Dietary Information

Key: **Suitable for**

