

Supplier's Product Code :  
Product Added :  
Last Updated by Supplier :  
erudus id :

1344 187133  
18 October 2024  
18 October 2024  
fcfd0e7e6cbc4f78a102fbc6b669cd



The information on the **Erudus System** has been supplied by the manufacturers of the products and, whilst the owners of the Erudus System take steps to ensure the information is regularly updated, they give no warranty and no guarantee that the information is accurate. Product information and ingredients may change, please always read product labels carefully in addition to using the information provided by Erudus One.

We do not accept liability for any inaccuracies or incorrect information contained on this site. Please visit <http://www.erudus.com/terms-and-conditions> for full terms and conditions.

## 1344 - Raspberry Eton Mess Cheesecake (Pre-cut 16 Portion)

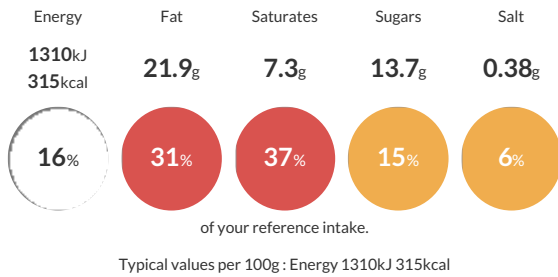
Short Product Name:  
Raspberry Eton Mess Cheesecake

A crunchy biscuit base with a smooth cold set rippled raspberry cheesecake, topped with cream, a raspberry drizzle and crushed meringue pieces

Traded Unit GTIN: **5060622441709** Internal GTIN: Supplier: **Eatons Patisserie** Suppliers Product Code: **1344 187133**

### Reference Intake

Each 100g portion contains:



### Nutritional Information

Typical Values	Per 100g
Energy	1310kJ 315kCal
Carbohydrates	24.1g
of which sugars	13.7g
Fat	21.9g
of which saturates	7.3g
Fibre	0.8g
Protein	5.5g
Salt	0.38g

### Allergy Information

Key: **Contains** **May Contain**



### Dietary Information

Key: **Suitable for**



### Ingredients

Cream (<b>MILK</b>), <b>WHEAT</b> Flour (With Calcium, Iron, Niacin, Thiamin), Wholemeal <b>WHEAT</b> Flour, Vegetable Shortening (Palm & Rapeseed Oil), Sugar, Partially Invert Sugar Syrup, Raising Agents (Sodium Bicarbonate, Ammonium Carbonate), Salt, Light Soft Cheese [Skimmed <b>MILK</b>, Cream (<b>MILK</b>), Skimmed <b>MILK</b> Powder, Lactic Cultures, Salt, <b>MILK</b> Protein, Preservative (Potassium Sorbate E202)], Raspberry Fruit Filling [Raspberries (38%), Water, Sugar, Modified Starch, Acidity Regulator (Citric Acid E330), Preservative (Potassium Sorbate E202)], Vegetable Oil (Palm & Rapeseed Oil), Water, Salt, Emulsifier (Distilled Monoglyceride E471), Flavouring, Colouring (Annatto Bixin E160b(i), Curcumin E100), Raspberries, Sugar, Cream Stabiliser [Sugar, Dried Glucose Syrup, Gelatine, Modified Starch [Acetylated Distarch Phosphate E1414], <b>EGG</b> Yolk Powder, Acidity Regulator [Disodium Phosphate E450(i)], Salt], Meringue (Sugar, <b>EGG</b> White), Invert Sugar Syrup, Gelatine, Glucose Syrup, Invert Sugar Syrup, Raspberry Pulp, Acidity Regulator (E330 Citric Acid), Ethyl Alcohol, Elderberry Concentrate, Starch, Natural Flavouring, Sweet Snow [Dextrose, Sugar, Cornflour, Vegetable Oil (Palm)], Vanilla Flavourings, Colour Ammonia Caramel E150c. Meringue (2%) [Sugar, <b>EGG</b> White], Fond Instant Neutral Glaze [Sugar, Dried Glucose Syrup, Gelatine, Modified Starch (Acetylated Distarch Phosphate E1414), <b>EGG</b> Yolk Powder, Acidity Regulator (Disodium Diphosphate E450i), Salt], Golden Syrup [Invert Sugar Syrup], Gelatine, Raspberry Paste [Glucose Syrup, Invert Sugar Syrup, Raspberry Pulp 15%, Acid (Citric Acid), Ethyl Alcohol, Elderberry Concentrate, Starch, Natural Flavouring], Preservative (Potassium Sorbate E202), Natural Flavouring, Sweet Snow [Dextrose, Cornflour, Palm Oil], Vanilla Flavouring