

Supplier's Product Code :  
Product Added :  
Last Updated by Supplier :  
erudus id :

10200 - PP200  
31 October 2007  
27 January 2022  
fe0eac03c41f4e19a4da561b4f2bd641



The information on the **Erudus System** has been supplied by the manufacturers of the products and, whilst the owners of the Erudus System take steps to ensure the information is regularly updated, they give no warranty and no guarantee that the information is accurate. Product information and ingredients may change, please always read product labels carefully in addition to using the information provided by Erudus One.

We do not accept liability for any inaccuracies or incorrect information contained on this site. Please visit <http://www.erudus.com/terms-and-conditions> for full terms and conditions.

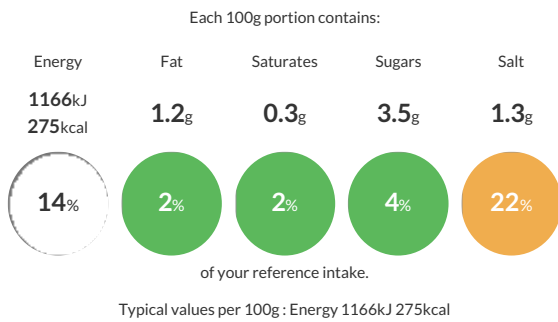
## 40 BAGUETTES 225g

Short Product Name:  
BAGUETTE

Baguette with 5 cuts

Traded Unit GTIN: **3516870102005** Internal GTIN: Supplier: **Planète Pain** Suppliers Product Code: **10200 - PP200**

### Reference Intake



### Nutritional Information

Typical Values	Per 100g
Energy	1166kJ 275kCal
Carbohydrates	56.5g
of which sugars	3.5g
Fat	1.2g
of which saturates	0.3g
Fibre	-g
Protein	8.9g
Salt	1.3g

### Allergy Information

Key: **Contains** **May Contain**



### Dietary Information

Key: **Suitable for**



### Ingredients

WHEAT flour, water, yeast, salt, **WHEAT GLUTEN**, flour treatment agent : E300, enzymes, malted **WHEAT** flour.