

Supplier's Product Code :  
Product Added :  
Last Updated by Supplier :  
erudus id :

40152000  
12 July 2024  
12 July 2024  
fe16d17e216243c8980a095703092fe6



The information on the [Erudus System](#) has been supplied by the manufacturers of the products and, whilst the owners of the Erudus System take steps to ensure the information is regularly updated, they give no warranty and no guarantee that the information is accurate. Product information and ingredients may change, please always read product labels carefully in addition to using the information provided by Erudus One.

We do not accept liability for any inaccuracies or incorrect information contained on this site. Please visit <http://www.erudus.com/terms-and-conditions> for full terms and conditions.

## Fermipan Red Instant Dried Yeast 20x500g

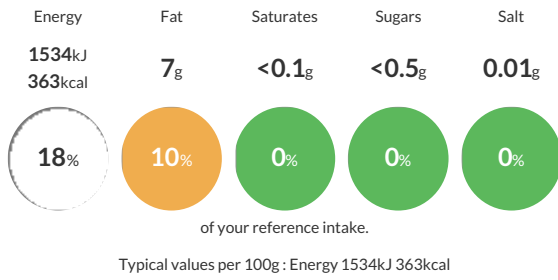
Short Product Name:  
Dried Yeast

Instant dried yeast for lean dough bread types requiring high fermentation power 1% emulsifier sorbitan mono-stearate E491

Traded Unit GTIN: - Internal GTIN: **5017837000122** Supplier: **Kiril Mischeff Ltd** Suppliers Product Code: **40152000**

### Reference Intake

Each 100g portion contains:



### Nutritional Information

Typical Values	Per 100g
Energy	1534kJ 363kCal
Carbohydrates	40g
of which sugars	<0.5g
Fat	7g
of which saturates	<0.1g
Fibre	-g
Protein	50g
Salt	0.01g

### Allergy Information

Key: **Contains** **May Contain**



### Dietary Information

Key: **Suitable for**



### Ingredients

Yeast, Water, emulsifier sorbitan mono-stearate E491