

Supplier's Product Code :  
Product Added :  
Last Updated by Supplier :  
erudus id :

MSQW021  
07 July 2022  
05 April 2024  
ff512c206d4e4a728649f63f7dcc31d8



The information on the **Erudus System** has been supplied by the manufacturers of the products and, whilst the owners of the Erudus System take steps to ensure the information is regularly updated, they give no warranty and no guarantee that the information is accurate. Product information and ingredients may change, please always read product labels carefully in addition to using the information provided by Erudus One.

We do not accept liability for any inaccuracies or incorrect information contained on this site. Please visit <http://www.erudus.com/terms-and-conditions> for full terms and conditions.

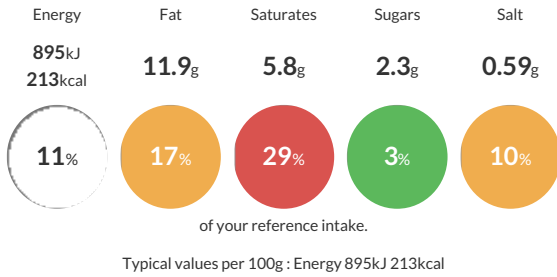
## Ch & Onion Quiche 11" (1 x 1)

11" diameter, whole quiche made with egg, onion, spring onion and mature Cheddar cheese encased in shortcrust pastry. Approx. 12 ptns per quiche/100g per ptn. Serve hot or thaw and serve cold. Suitable for vegetarians. Made with palm from a sustainable source, RSPO certificate number: BMT-RSPO-000578. (1 x 1)

Traded Unit GTIN: **05060062473773** Internal GTIN: Supplier : **Central Foods Group Ltd** Suppliers Product Code : **MSQW021**

### Reference Intake

Each 100g portion contains:



### Nutritional Information

Typical Values	Per 100g
Energy	895kJ 213kCal
Carbohydrates	21.6g
of which sugars	2.3g
Fat	11.9g
of which saturates	5.8g
Fibre	0.9g
Protein	5.8g
Salt	0.59g

### Allergy Information

Key: **Contains** **May Contain**



#### Allergen Statement

For allergens, including cereals containing gluten, see ingredients in **CAPITALS**.

### Ingredients

Pastry Case: Fortified **WHEAT** Flour (with Calcium, Iron, Niacin, Thiamine), Margarine (Palm Oil, Coconut Oil, Rapeseed Oil, Water, Salt, Emulsifier (Mono- and Diglycerides of Fatty Acids), Acidity Regulators (Citric Acid, Disodium Citrate), Natural Flavouring, Colour (Natural Carotenes)), Shortening (Palm Oil, Rapeseed Oil), Maize Flour, Water, Tomato Puree, Sea Salt. Filling: Water, Whole Liquid **EGG** (12%), Onion (7%), Mature Cheddar Cheese (6%) (**MILK**, Salt, Starter, Rennet, Colour (Annatto Bixin, Norbixin), Potato Starch), Spring Onion (5%), Whole **MILK** Powder, Cornflour, Modified Maize Starch, Chives, Sea Salt, **MUSTARD** Powder, Ground White Pepper.

### Dietary Information

Key: **Suitable for**

