

Supplier's Product Code :
Product Added :
Last Updated by Supplier :
erudus id :

888F
03 July 2023
31 August 2023
ff842be8eb4d4e69a346bc88608b3462



The information on the Erudus System has been supplied by the manufacturers of the products and, whilst the owners of the Erudus System take steps to ensure the information is regularly updated, they give no warranty and no guarantee that the information is accurate. Product information and ingredients may change, please always read product labels carefully in addition to using the information provided by Erudus One.

We do not accept liability for any inaccuracies or incorrect information contained on this site. Please visit <http://www.erudus.com/terms-and-conditions> for full terms and conditions.

Sourdough Bloomer

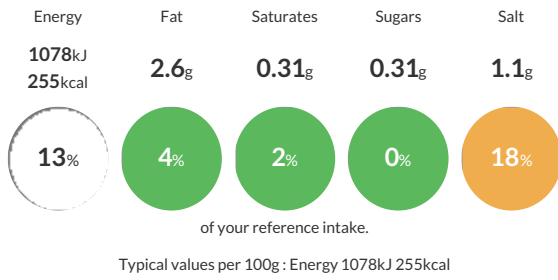
Short Product Name:
Bloomer

Sourdough Bloomer.

Traded Unit GTIN: - Internal GTIN: Supplier: The Sourdough Company Ltd Suppliers Product Code: 888F

Reference Intake

Each 100g portion contains:



Nutritional Information

Typical Values	Per 100g
Energy	1078kJ 255kCal
Carbohydrates	49.4g
of which sugars	0.31g
Fat	2.6g
of which saturates	0.31g
Fibre	2.1g
Protein	7.5g
Salt	1.1g

Allergy Information

Key: Contains May Contain



Allergen Statement

This product contains **WHEAT** and may contain **RYE** and **BARLEY**.

Ingredients

White **WHEAT** Flour (**WHEAT** Flour, Calcium Carbonate, Iron, Niacin, Thiamin, **WHEAT GLUTEN**), Water, Rapeseed Oil, White Starter, (White **WHEAT** Flour, Water), Potato Flakes (Dried Potato), Salt, Yeast, Crumb Softener (Enzymes, **WHEAT** Flour), Ascorbic Acid.

Dietary Information

Key: Suitable for

